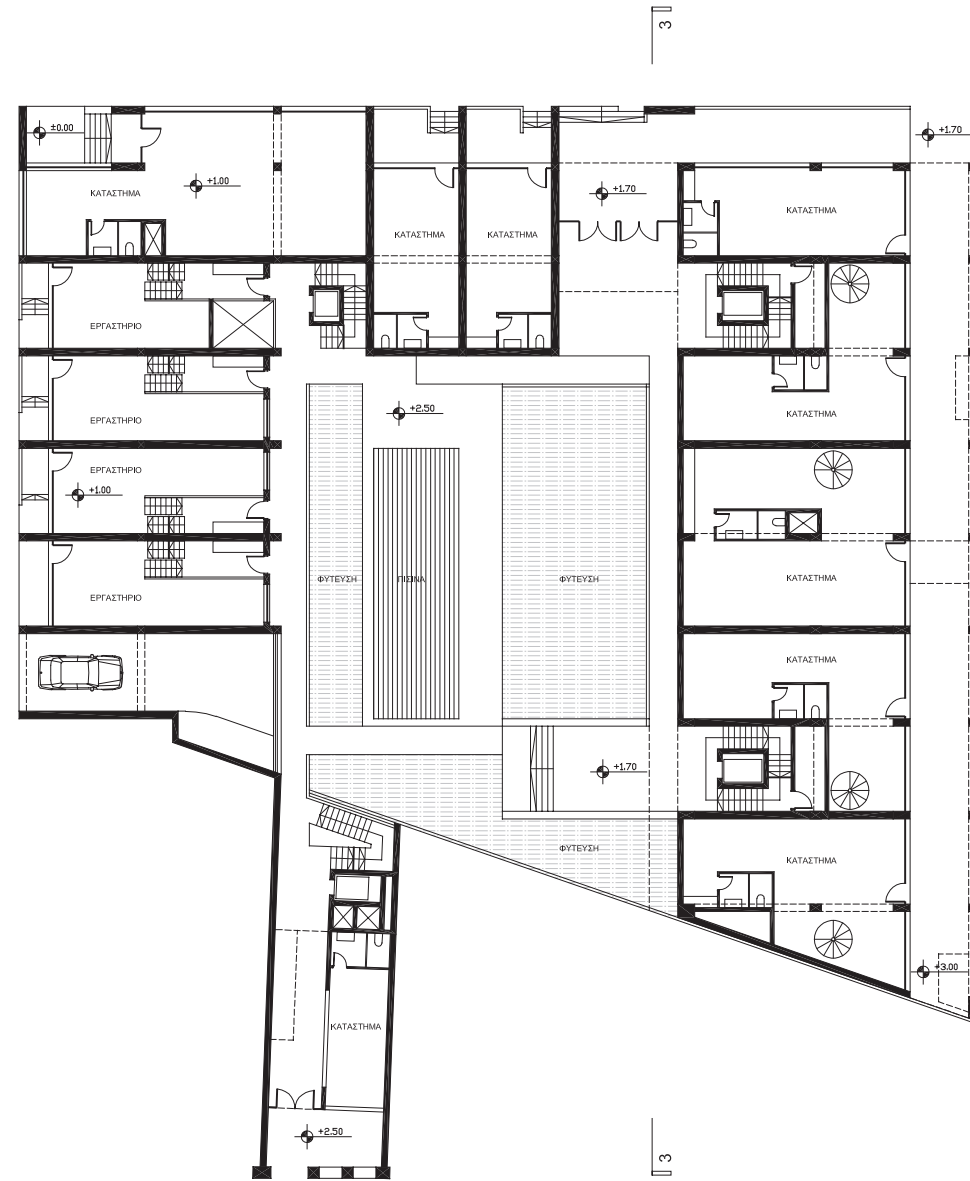




ΚΑΤΟΨΗ ΥΠΟΓΕΙΩΝ [-1.30 / -3.00] + [-4.30 / -6.00]



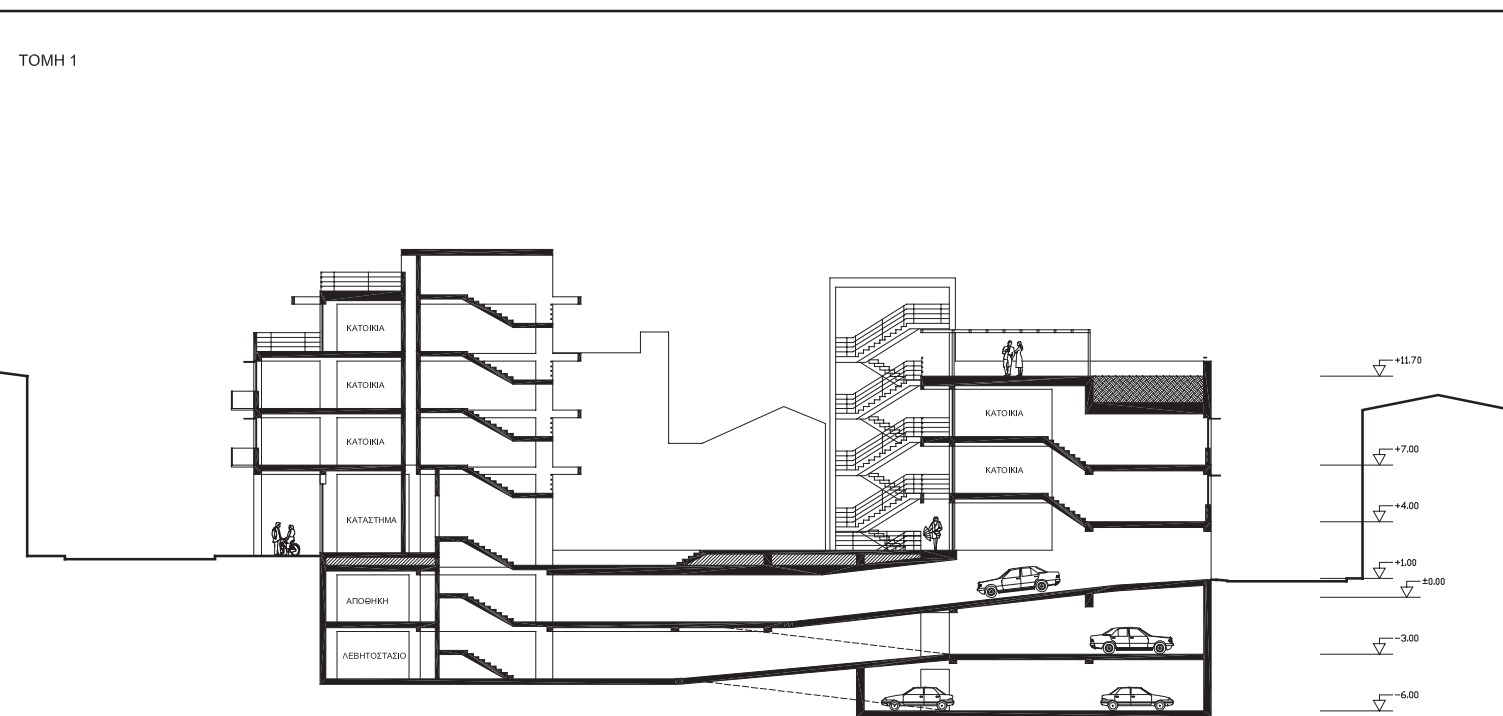
ΚΑΤΟΨΗ ΙΣΟΓΕΙΟΥ [±0.00 / +1.00 / +1.70 / +2.50]



ΚΑΤΟΨΗ Α' ΟΡΟΦΟΥ [+4.00 / +5.50 / +7.00]



ΤΟΜΗ 1



ΤΟΜΗ 3

